

# Foreign qualification assessment

The extract indicates what a foreign qualification is comparable to in the Swedish qualification system. The information can be used when applying for a job or planning for further studies. Decisions regarding employment, admission or formal professional recognition are made by the employer, education provider or competent authority.

## Qualification from Australia



**Degree of Bachelor of Psychology (Honours)**

## Swedish comparison



**Kandidatexamen**  
Degree of Bachelor

### About the qualification comparison

UHR assesses the foreign qualification as comparable to a Swedish Degree of Bachelor. The foreign qualification is in a profession that is regulated (requires authorisation) in Sweden. The National Board of Health and Welfare is the competent authority that decides on licences for work as a healthcare practitioner. Please visit [socialstyrelsen.se](http://socialstyrelsen.se)

The figure below shows the assigned level of the Swedish qualification in the Swedish National Qualifications Framework (SeQF) and how it relates to the European qualifications frameworks.

This assessment is provided as guidance by UHR. It is based on our knowledge of the country's education system and not on the individual's education documents. UHR applies the principles of the international recognition convention Lisbon Recognition Convention and assumes the foreign qualification is recognised in the country of study.

Find out more about [higher education in Sweden and the admission process at Universityadmissions.se](http://Universityadmissions.se)

## About the Swedish Council for Higher Education

The Swedish Council for Higher Education (UHR) is Sweden's ENIC-NARIC centre. We have a national task to inform about and evaluate foreign education.

Go to the Qualifications Assessment Tool: [www.uhr.se/en/start/recognition-of-foreign-qualifications/qualifications-assessment-tool/australia/degree-of-bachelor-of-psychology-honours-372/](http://www.uhr.se/en/start/recognition-of-foreign-qualifications/qualifications-assessment-tool/australia/degree-of-bachelor-of-psychology-honours-372/).

### To employers

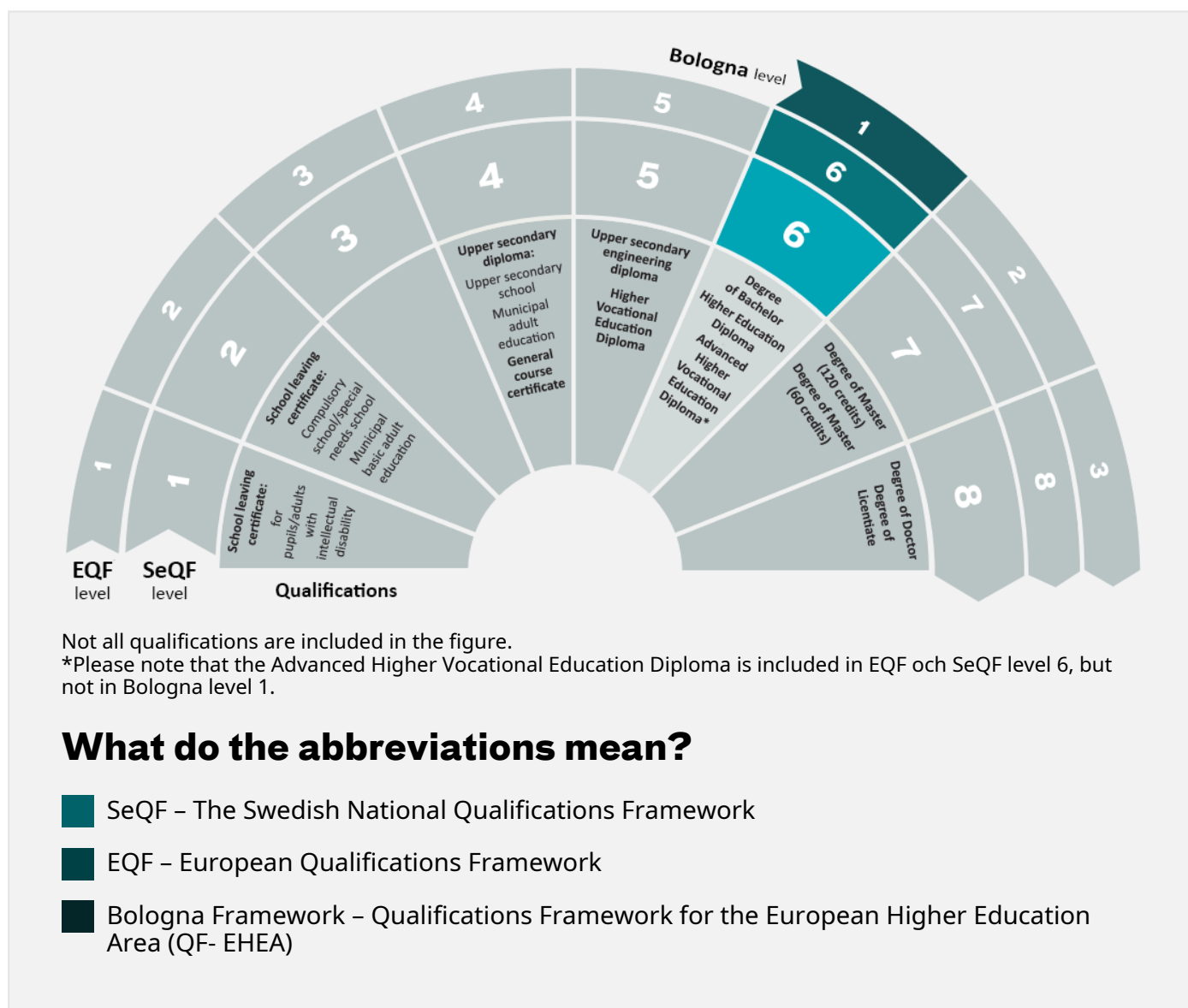
This extract should be used together with an individual's education documents. If you as an employer have questions about foreign education or a job applicant's education documents, you are welcome to contact UHR. E-mail: [utbildningsbedomning@uhr.se](mailto:utbildningsbedomning@uhr.se)

## Facts about Degree of Bachelor of Psychology (Honours)

<b>Duration</b>	4 years
<b>Credits</b>	The country has no national credit system. However, the university may still use a credit system.
<b>Information about the qualification</b>	The qualification prepares for professional activity as a psychologist in Australia. The qualification includes a degree project. The qualification gives access to Master's- or doctoral-level programmes in Australia.
<b>National Qualifications Framework (NQF)</b>	<a href="#">Australian Qualifications Framework (AQF)</a> The national qualifications framework (AQF) has 10 levels, where 1 is the lowest and 10 is the highest. Australia's framework has been compared to the European qualifications framework (EQF)
<b>NQF level</b>	8 The qualification is compared to level 6 at EQF.
<b>Recognised higher education institutions</b>	<a href="#">Tertiary Education Quality and Standards Agency</a> Please note the country can have additional recognised education institutions.

## The level of Swedish qualifications and degrees

Swedish degrees and final grades are placed within reference frameworks that show different levels of learning outcomes. In the figure, the Swedish reference framework SeQF is shown as well as the European reference frameworks that facilitate comparison to other countries. Please note the figure does not contain all Swedish qualifications.



### What do the abbreviations mean?

- SeQF – The Swedish National Qualifications Framework
- EQF – European Qualifications Framework
- Bologna Framework – Qualifications Framework for the European Higher Education Area (QF- EHEA)