

Foreign qualification assessment

The extract indicates what a foreign qualification is comparable to in the Swedish qualification system. The information can be used when applying for a job or planning for further studies. Decisions regarding employment, admission or formal professional recognition are made by the employer, education provider or competent authority.

Qualification from Belgium (Flemish Community)

**Gegradueerde**

Bachelor of professional education

Swedish comparison

**Kandidatexamen**

Degree of Bachelor

About the qualification comparison

UHR assesses the foreign qualification as comparable to a Swedish Degree of Bachelor.

The foreign qualification belongs to the country's applied science sector.

The figure below shows the assigned level of the Swedish qualification in the Swedish National Qualifications Framework (SeQF) and how it relates to the European qualifications frameworks.

This assessment is provided as guidance by UHR. It is based on our knowledge of the country's education system and not on the individual's education documents. UHR applies the principles of the international recognition convention Lisbon Recognition Convention and assumes the foreign qualification is recognised in the country of study.

Find out more about [higher education in Sweden and the admission process at Universityadmissions.se](https://www.universityadmissions.se)

About the Swedish Council for Higher Education

The Swedish Council for Higher Education (UHR) is Sweden's ENIC-NARIC centre. We have a national task to inform about and evaluate foreign education.

Go to the Qualifications Assessment Tool: www.uhr.se/en/start/recognition-of-foreign-qualifications/qualifications-assessment-tool/belgium/gegradueerde-3765/.

To employers

This extract should be used together with an individual's education documents. If you as an employer have questions about foreign education or a job applicant's education documents, you are welcome to contact UHR. E-mail: utbildningsbedomning@uhr.se

Facts about Gegradueerde (Bachelor of professional education)

Duration	3 years
Credits	180 (national credit) Studiepunten, sp.
ECTS	180 credits
Information about the qualification	<p>The degree was phased out after 2004.</p> <p>The qualification belongs to the country's applied science sector. The qualification includes a placement and may include a degree project. The study programme prepares for the labor market and does not provide direct access to Master's programme in Belgium.</p>
National Qualifications Framework (NQF)	<p>Fédération Wallonie-Bruxelles: Cadre francophone des certifications (CFC)</p> <p>The Flemish Qualifications Framework/De Vlaamse kwalificatiestructuur (FQF)</p> <p>Cadre des certifications de l'enseignement supérieur</p> <p>Both national qualifications frameworks (CFC and FQF) have 8 levels, where 1 is the lowest and 8 is the highest. The framework for higher education consists of three levels and a short cycle (corresponding to level 5-8).</p>
NQF level	The degree/qualification was completed before the country had an NQF and therefore was not assigned a level.
Recognised higher education institutions	<p>Recognized universities in the French-speaking region Fédération Wallonie-Bruxelles</p> <p>Recognized HEIs in the Dutch-speaking region of Flanders</p> <p>There are three types of colleges in the Walloon University sector: Université (University), École supérieure des Arts (University of Fine Arts) and Haute École (University College). There are two types of recognised higher education institutions in the Flandern university sector: Universiteit (University) and Hogeschool (University College). A transition</p>

between university types often requires supplementary studies.

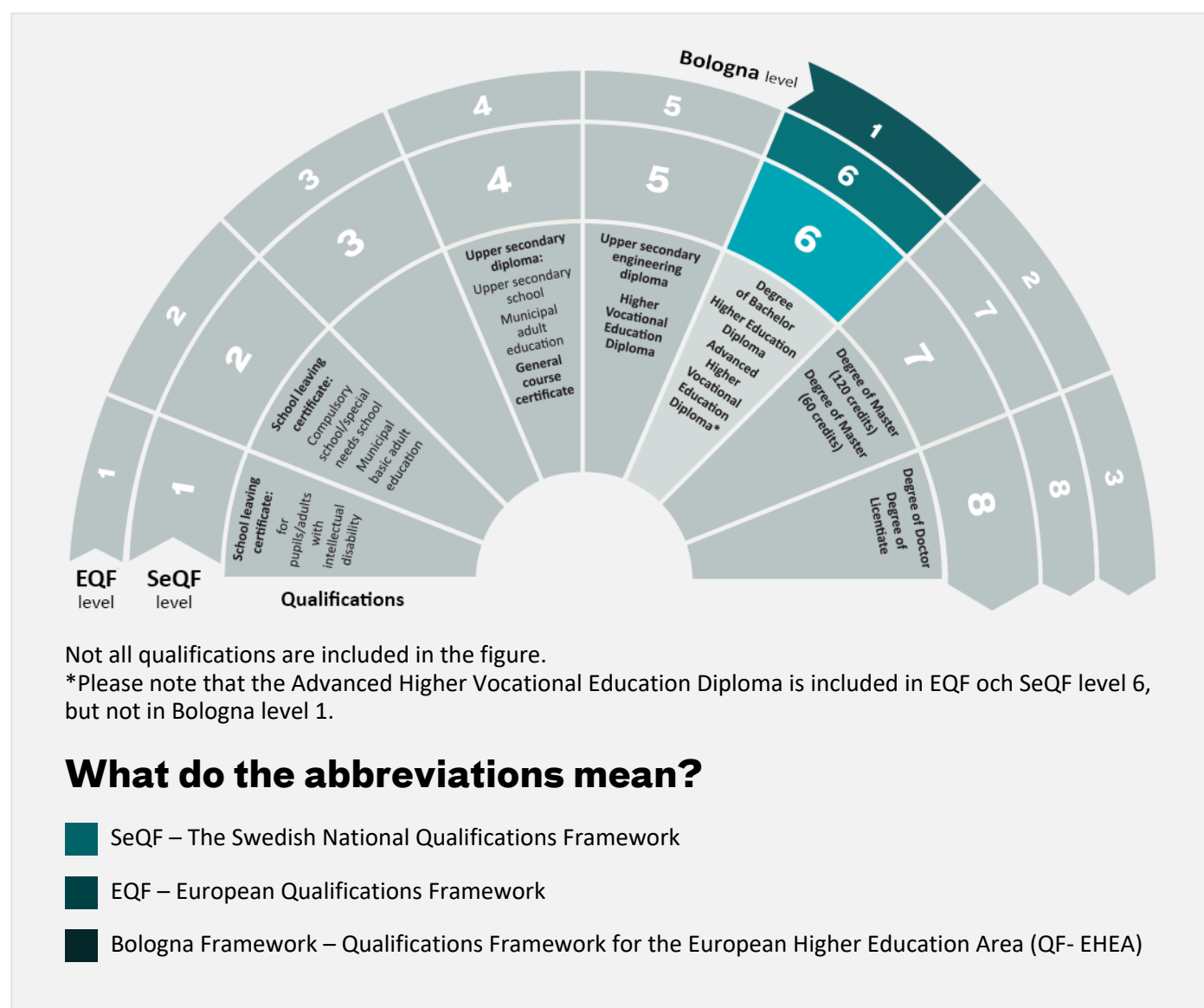
Please note the country can have additional recognised education institutions.

Country information



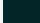
There are three different education systems in Belgium: the Flemish Community (Dutch language), the French Community (Wallonia, French language) and the German speaking Community in the east. Each region has its own qualifications framework.

The level of Swedish qualifications and degrees

Swedish degrees and final grades are placed within reference frameworks that show different levels of learning outcomes. In the figure, the Swedish reference framework SeQF is shown as well as the European reference frameworks that facilitate comparison to other countries. Please note the figure does not contain all Swedish qualifications.



What do the abbreviations mean?

-  SeQF – The Swedish National Qualifications Framework
-  EQF – European Qualifications Framework
-  Bologna Framework – Qualifications Framework for the European Higher Education Area (QF- EHEA)