

Foreign qualification assessment

The extract indicates what a foreign qualification is comparable to in the Swedish qualification system. The information can be used when applying for a job or planning for further studies. Decisions regarding employment, admission or formal professional recognition are made by the employer, education provider or competent authority.

Qualification from Ethiopia



Ethiopian Secondary School Leaving Certificate Examination (ESSLCE) / Secondary School Leaving Examination (SSLE)

Swedish comparison



Gymnasieexamen
Upper Secondary Diploma

About the qualification comparison

UHR assesses the foreign qualification as comparable to a Swedish Upper Secondary Diploma.

The foreign qualification gives access to higher education in Sweden. Additional general and specific entry requirements may apply.

The figure below shows the assigned level of the Swedish qualification in the Swedish National Qualifications Framework (SeQF) and how it relates to the European qualifications frameworks.

This assessment is provided as guidance by UHR. It is based on our knowledge of the country's education system and not on the individual's education documents. UHR applies the principles of the international recognition convention Lisbon Recognition Convention and assumes the foreign qualification is recognised in the country of study.

Find out more about [higher education in Sweden and the admission process at Universityadmissions.se](https://www.universityadmissions.se)

About the Swedish Council for Higher Education

The Swedish Council for Higher Education (UHR) is Sweden's ENIC-NARIC centre. We have a national task to inform about and evaluate foreign education.

Go to the Qualifications Assessment Tool: www.uhr.se/en/start/recognition-of-foreign-qualifications/qualifications-assessment-tool/ethiopia/ethiopian-secondary-school-leaving-certificate-examination-esslce--secondary-school-leaving-examination-ssle--8635/.

To employers

This extract should be used together with an individual's education documents. If you as an employer have questions about foreign education or a job applicant's education documents, you are welcome to contact UHR. E-mail: utbildningsbedomning@uhr.se

Facts about Ethiopian Secondary School Leaving Certificate Examination (ESSLCE) / Secondary School Leaving Examination (SSLE)

Information about the qualification

The qualification was introduced in 2021.

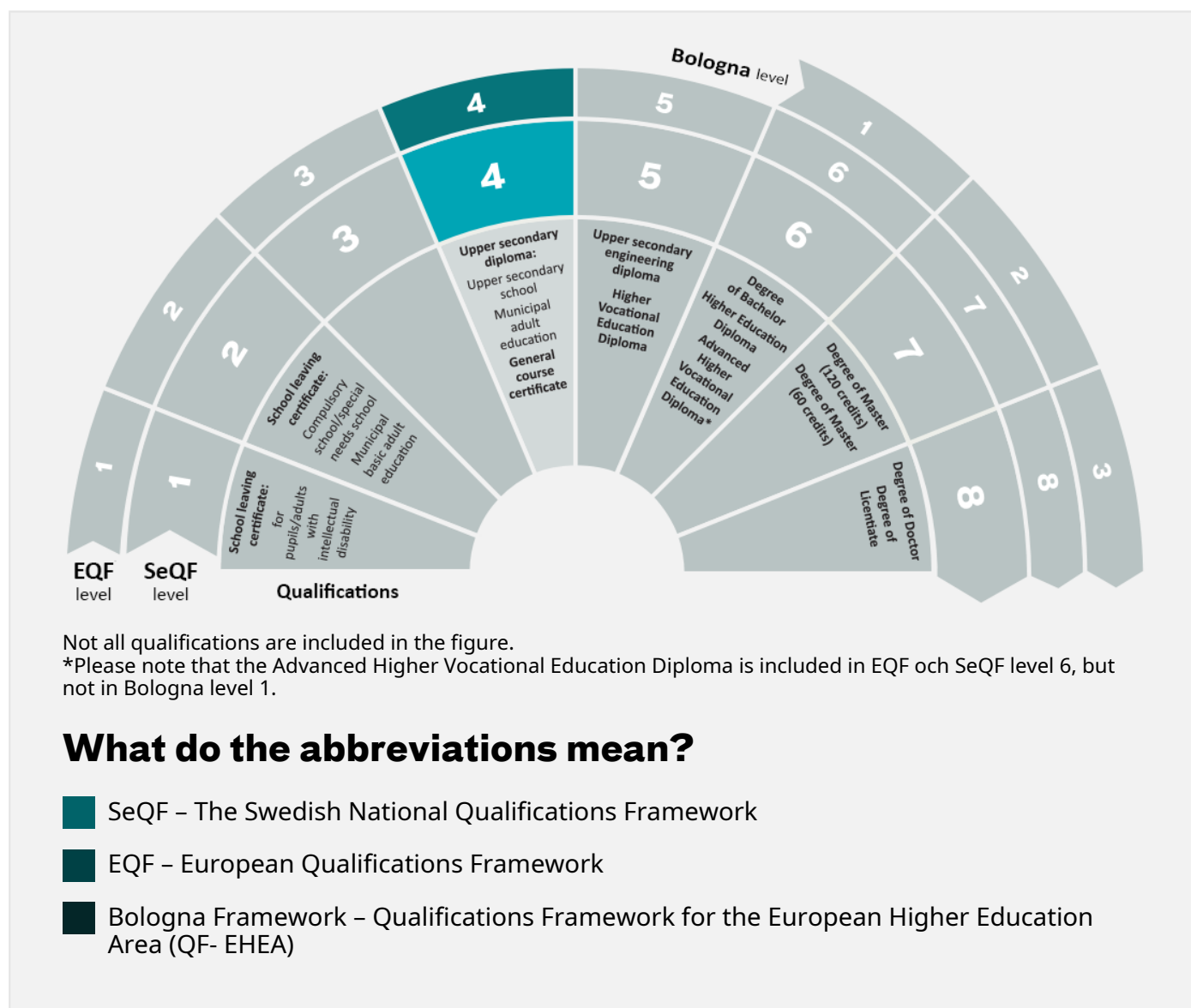
The qualification is taken upon completion of upper secondary education and gives access to higher education study. For access to higher education study in Sweden students need passes in at least seven subjects.

Country information

A national qualifications framework (Ethiopian National Qualifications Framework, ENQF) is under development at The Higher Education Strategy Center (HESC). No final version has been published yet.

The level of Swedish qualifications and degrees

Swedish degrees and final grades are placed within reference frameworks that show different levels of learning outcomes. In the figure, the Swedish reference framework SeQF is shown as well as the European reference frameworks that facilitate comparison to other countries. Please note the figure does not contain all Swedish qualifications.



What do the abbreviations mean?

- SeQF – The Swedish National Qualifications Framework
- EQF – European Qualifications Framework
- Bologna Framework – Qualifications Framework for the European Higher Education Area (QF- EHEA)